

Model TSA22

None-Contact Angle Position Sensor

- ▶ Hall effective
- ▶ Absolute Position
- ▶ Linearity < $\pm 0.2\%$
- ▶ Long life
- ▶ Single turn
- ▶ Servo + Penal Mount



MECHANICAL		
	Mechanical Range	360°
	Starting Torque	0.5Ncm
	Max Rotating Speed	120rpm
	Max Permitted Axial Shaft Load	10N
	Max Permitted Radial Shaft Load	10N
	Weight	21g

ELECTRICAL		
	Measuring Range	0 ~ 360°
	Independent Linearity	< $\pm 0.2\%$
	Resolution	12 bit
	Refresh Rate	290 (± 15) μ s
	Max. Hysteresis	0.1°
	Max. Repeatability	0.1°
	Supply Voltage	5 ($\pm 10\%$) VDD, Avail for other options
	Supply Current	<12mA
	Output Load Analog	10k Ω
	Load Output Capacity	10 to 330nF

ENVIRONMENTAL		
	Protection Class	IP54/65
	Min. Life	10 millions Turns
	Operation Temperature Range	-40°C ~ +150°C
	Storage Temperature	-40°C ~ +85°C
	IEC 68-2-6 Vibration (Amax = 0.75mm, f = 5 ... 2000 Hz)	20g

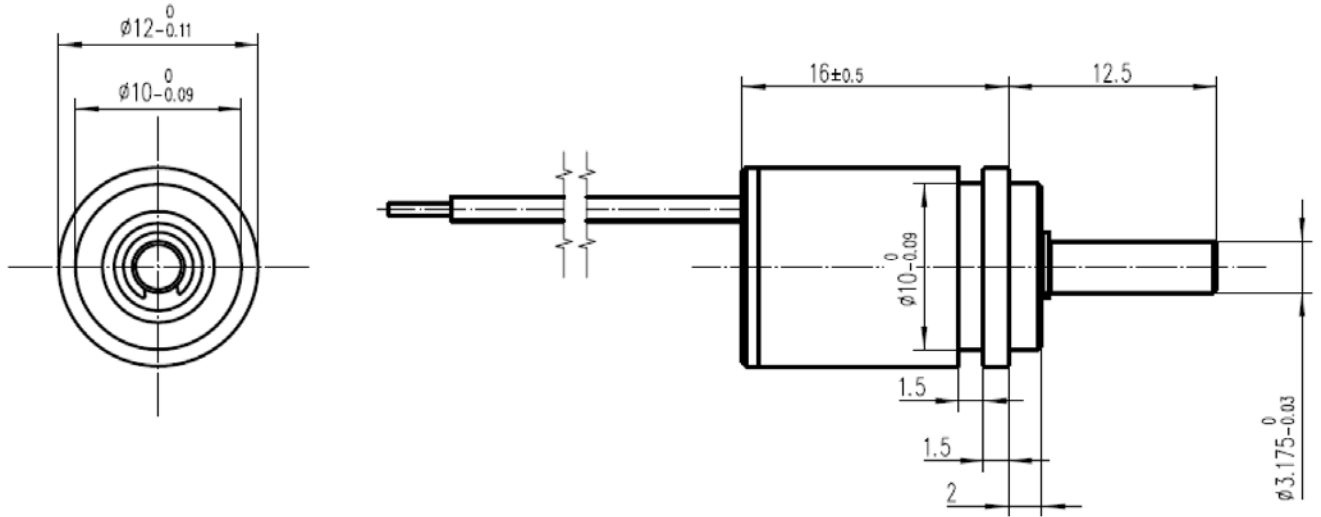
CE-CONFORMITY	
	RF noise field strength EN 55011, class B
	ESD EN 61000-4-2
	Radiated immunity EN 61000-4-3
	Burst EN 61000-4-4
	Conducted disturbances induced by RF fields EN 61000-4-6



ORDERING INFORMATION

<p>TSA 22</p>	<p>1 1 1 3 6 0 D 1 E</p>	<p>Effective Electronic Travel 360 Standard 360° X Optional Available for other Angle Request</p> <p>Shaft Type D Standard D Type I Standard I Type R Standard Round Type X Optional Customized are avail</p> <p>Shaft Length 1 Standard 12mm X Optional Customized are avail</p> <p>Operation Temperature E Standard -40°C ~ +85°C K Standard -40°C ~ +125°C L Optional -40°C ~ +150°C</p>
<p>Output Signal 1 Standard 10% - 90% 2 Standard 0% - 100% 3 Optional 4 - 20 mA X Optional X% - Y%</p> <p>Input Voltage 1 Standard 5V DC 2 Optional 10V DC 3 Optional 12V DC 4 Optional 24V DC X Optional Available for other Request</p> <p>Output Characteristic 1 Standard Positive gradient CW 2 Standard Positive gradient CCW 3 Optional Redundant, positive gradient CW 4 Optional Redundant, positive gradient CCW X Optional Available for other Request</p>		

OUTLINE DRAWING



ACCESSORY

Lock Nut	x2
Screw	x2